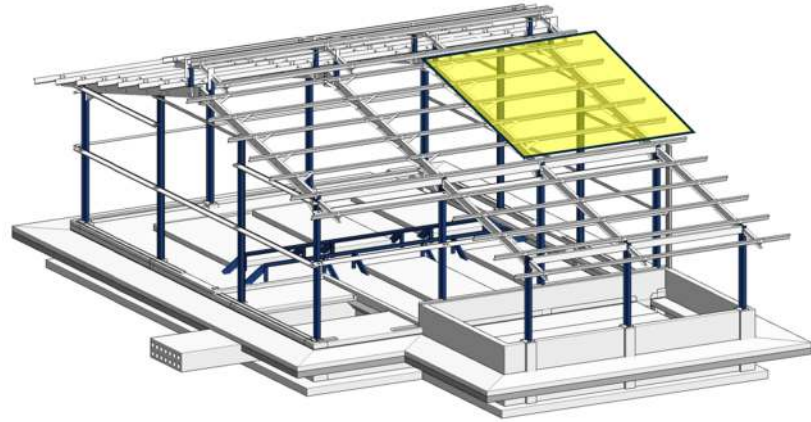
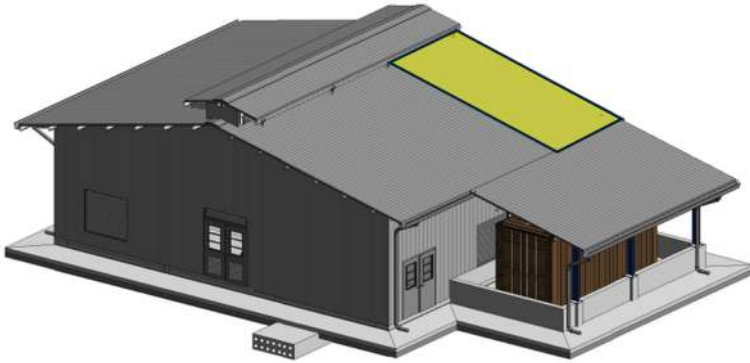


## Scope of Work

- Remove & reinstall all metal structure components required for access
  - 6 x 10 x 1/8 Zed Purlins
  - 26 ga galvalume sheets
  - Area shown below:



- Replacement of damaged components will be responsibility of vendor
- Roof panels must be resealed to prevent water leaks
- Schedule will require time between remove & reinstall to allow for generator installation – ETA Early September 2024