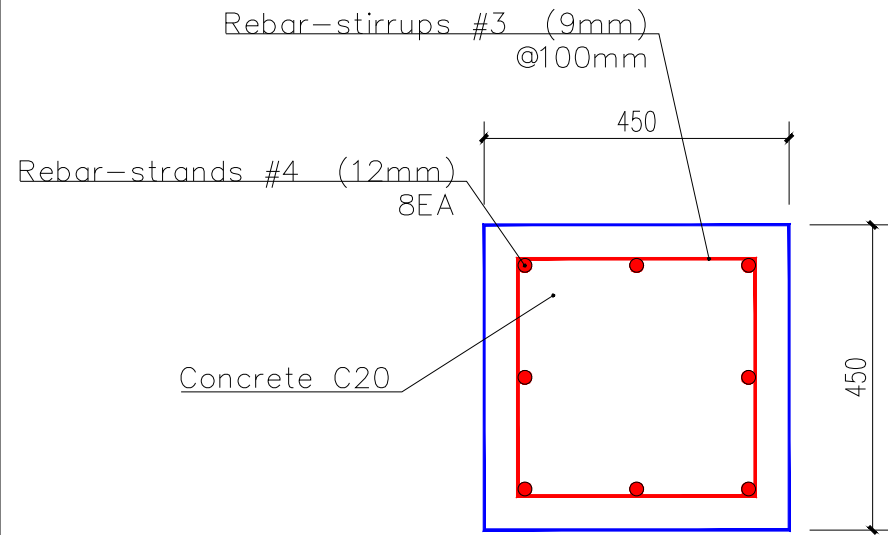
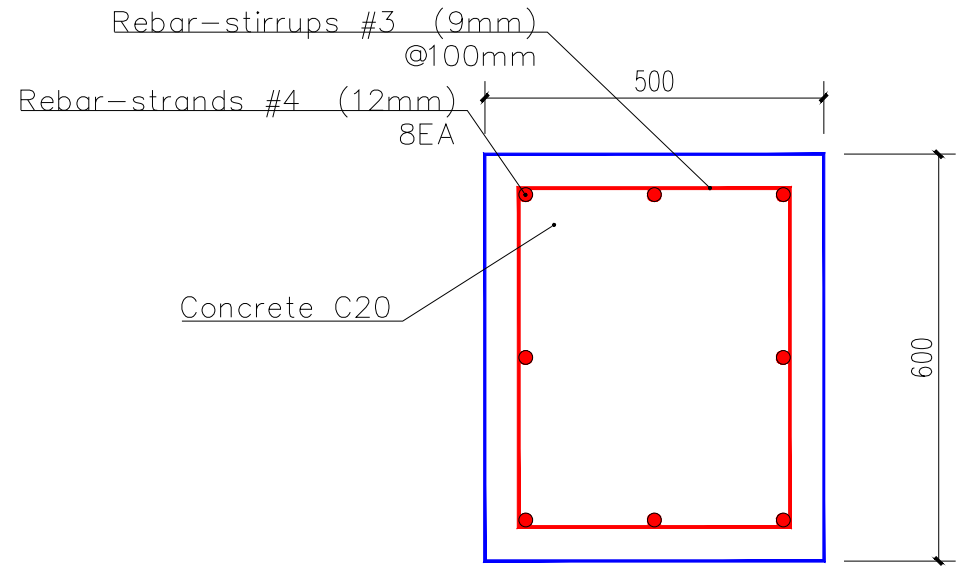


type A (1-1, 2-2, 4-4)



type B (3-3)



Note:

- Type A concrete members are to be prefabricated off-site and delivered to the construction site.
- Type B concrete members are to be cast in situ on-site.
- Concrete cover 50mm
- Minimum compressive strength of concrete on day 28: 20 MPa (2,900 PSI)