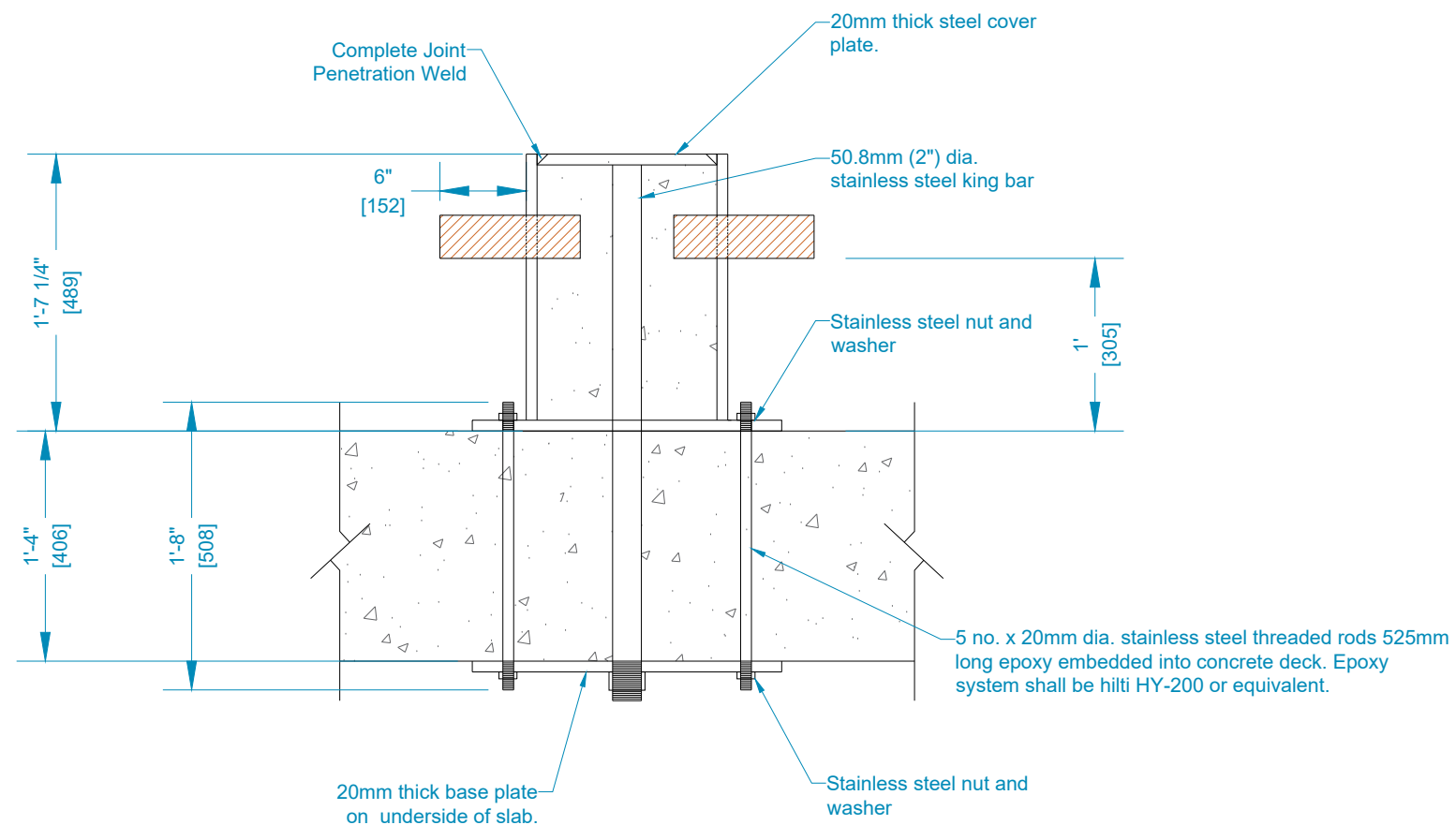
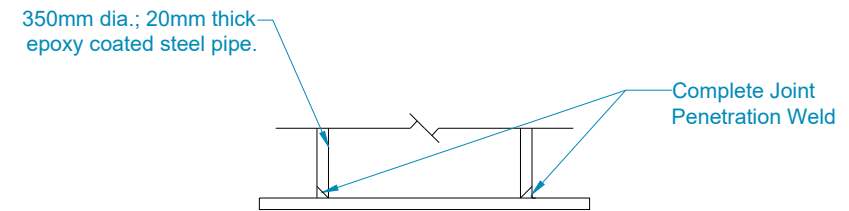


1 BOLLARD PLAN
SCALE: 1=12.5



2 BOLLARD SECTION
SCALE: 1=12.5



4 BASE PLATE STEEL PIPE CONNECTION DETAILS
SCALE: 1=12.5

Notes:

1. All threaded fasteners, washers and nuts are to be stainless steel; type 316 in conformance with ASTM A666 with a tensile yield strength of 517 MPa.
2. All welds to be complete penetration joint welds and done using the flux core arc welding (FCAW) method.
3. Holes for 20mm diameter threaded rods to base plates shall be **field drilled**.
4. All steel (base plate, ears and bollard pipe) to have a minimum yield strength of 345 MPa (50 ksi).
5. All steel surfaces to be prepared to SSPC-SP10 prior to application of epoxy paint system.
6. Bollard to be coated with the corrosion protection system as outlined below or similarly approved and applied in accordance with the manufacturer's specifications:
 - 6.1. Primer (1 coat) - Corothane GalvaPck 1K, dft 3-4 Mils.
 - 6.2. Sher-Loxane 800 Polysiloxane (2 coats), dft 4-6 Mils.
7. Provision shall be made for a Certified Coating Inspection Report for all bollard(s).



Project Title:	GSB BOLLARDS	Scale:	Scaled to fit	Date:	2025.03.03
Project Location:	GSB BERTHS 1 & 2	Surveyed by:	*****		
Drawing Title:	15-TON MOORING BOLLARD DETAILS	Drawing by:	I. Baksh	Drawing #:	
		Checked by:	G. Pasley R. Carter	GSB-MB-01	
		Approved by:		Appr. Date:	Page No: